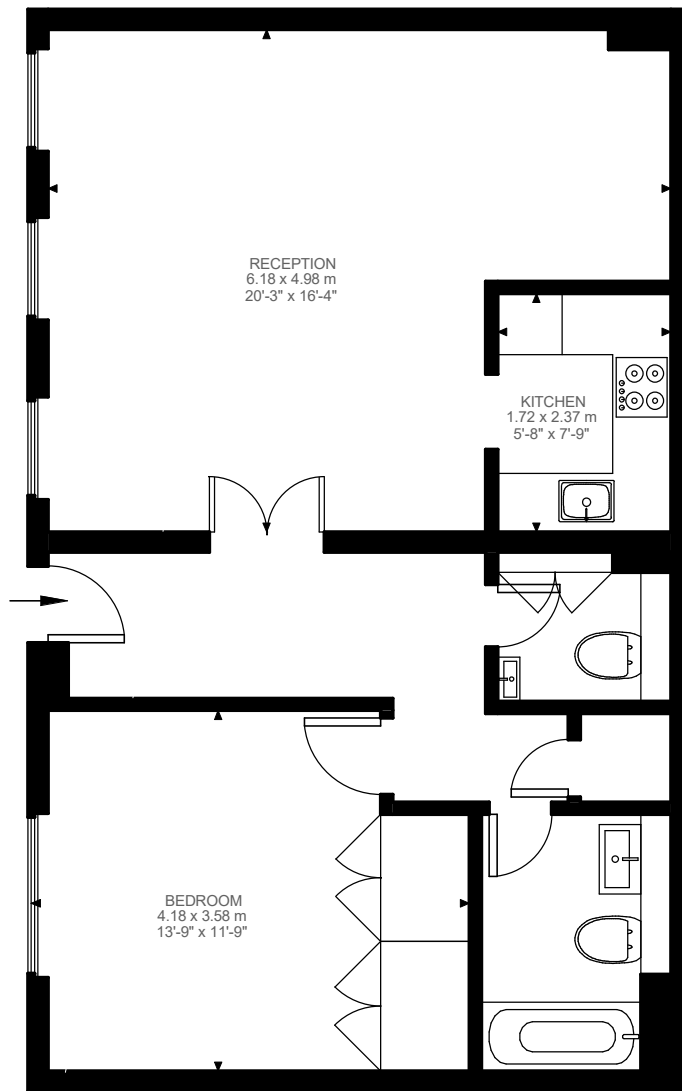


De Vere Mews, Kensington, W8



**BROMPTON**  
PROPERTY PARTNERS

Approximate Gross Internal Area  
64.32 SQ.M / 692 SQ.FT



First Floor  
692 ft<sup>2</sup>



Illustration for identification purposes only. Not to scale.  
Floor Plan Drawn According To RICS Guidelines.